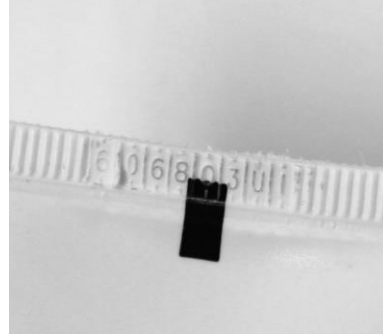


SUBJECT: BPO Batch Code / Batch Code Placement

Evercoat continues to use the Batch Code Dating system effective 2/1/97, based on PBEA vote for all tubes of BPO Cream Hardener. The example below shows the area where the batch date is located with a black mark at the crimp area.

This example below shows a batch date of **606803UI**.



Hint: To help read the numbers use a pencil or a marker to highlight the numbers

606803UI

| | | |
|----------|-------------|-------------------|
| 6 | 06 | 803UI |
| ↑ | ↑ | ↑ |
| Year | Month Batch | Batch Information |
| (2016) | (June) | |

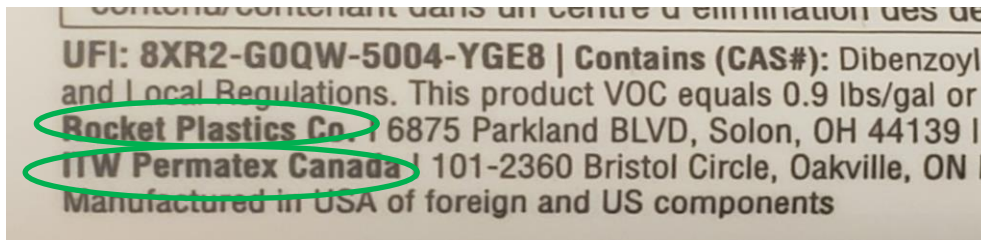
01=January **02**=February **03**=March **04**=April **05**=May **06**=June
07=July **08**=August **09**=September **10**=October **11**=November **12**=December

Branded Evercoat BPO Cream Hardener will have the GHS Caution Symbols shown below with three orange diamonds.

EVERCOAT Tube Format



The tubes will show the address for Rocket Plastics Co. and ITW Permatex Canada.



NOTE: The EVERCOAT Branded Tubes, and the Generic Tubes will both list ITW Permatex for distribution in Canada as per GHS Regulatory Requirements